



Advanced Door Control Solutions Inc.

~~~~~

### ***Rebuilt Catalog***

~~~~~

Floor
Surface Applied
Overhead Concealed

Contact us:

405 BACKBONE RD E
PRINCETON IL 61356-9689
815-875-4505 800-473-6781
FAX 815-872-1445

advanced@advdoor-inc.com
Website: www.advdoor-inc.com

Table of Contents

Floor Closers

Page 3 ~ 19

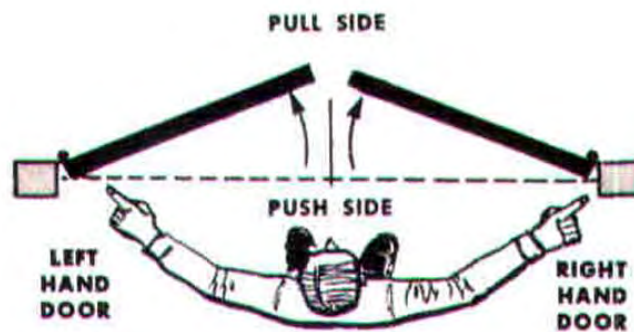
Surface Applied

Page 20 ~ 43

Overhead Concealed

Page 44 ~ 58

It is our mission, with this catalog, to provide to our customers the most information possible in the rebuilt door hardware industry. If you don't find exactly what you need in this book, then give us a call and we'll get the information to you right away. Our reputation depends on your satisfaction.



You can also stand with your back to the hinged jamb.

If door swings to the left – it is a left hand door.

If door swings to the right – it is a right hand door.

Floor Closers

Dorma

Page 4

Dor-O-Matic

Page 5 ~ 10

Kawneer / Mab

Page 11 ~ 12

LCN

Page 13

R & K

Page 14

Rixson

Page 15 ~ 18



Floor Closers

Standard spring size is #2.

The Dorma BTS Floor Closer series is currently non-rebuildable due to odd gaskets and seals used in manufacturing.

Call Advanced Door Control Solutions, Inc. at 800-473-6781 or Colorado Door Control, Inc. at 800-587-2611 for current pricing on factory replacement closers.

How to Identify:

The BTS 75 and 80 Series models are easily identifiable by the markings on the top of the closer.



Dorma BTS75 Series Floor Closer

Universal application range. Whether standard, narrow or wide, whether LH, RH, or single or double-action – the DORMA BTS 75 V door spring is designed for all types of doors. A comprehensive program of accessories ensures that it can be used successfully with a wide variety of door constructions and floor coverings.

Maximum reliability and quality. Thanks to a wide range of functions which can be individually selected to suit different requirements, DORMA BTS 75 V floor springs offer maximum reliability and quality.

Benefits for the trade/distributor

Dorma BTS80 Series Floor Closer

The BTS80 Series of floor-concealed door closers offer adaptability to almost any installation. The closer's compact body permits its use where a larger closer would be prohibitive. Versatility allows installation in thin slab concrete subfloor construction. A wide selection of interchangeable spindles makes the BTS80 suitable for virtually any floor covering or threshold application. Because the BTS80 can control exceptionally heavy single- and double-acting doors, you can incorporate the floor closer into almost any design to meet most materials, size, and weight requirements

Features:

- Closer body is non-handed.
- Mechanical back check at approximately 70 degrees.
- Selectable delayed action between 175 and 75 degrees. Extends the closing cycle to allow unobstructed passage.
- Delayed action is functional when hold open is not engaged.
- Dual thermostatic control valves combined with special hydraulic fluid provide controlled closing from 175 degrees.
- Selectable multipoint hold opens between approximately 75 and 175 degrees.
- Adjustment for start of hold open range or when delayed action releases. Adjustable between 75 and 105 degrees.

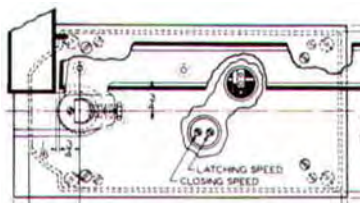


DOR-O-MATIC

Floor Closers

Model 200 Series

Features:



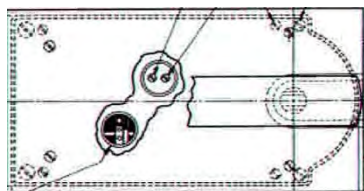
Handed
Single Acting
Offset Pivoted
Exterior and Interior use
200 = 105 degree hold open
201 = 105 degree no hold open
202 = 90 degree hold open
203 = 90 degree no hold open
204 = 175 degree hold open

How to Identify:

- The Model 200 series will be easily identifiable by markings on the top of the closer.
- Dor-O-Matic floor closers are machine gray in color.
- Case Size: 11-23/32" x 5-3/16"

Model 210 Series

Features:



Handed
Single Acting
Center Pivoted
Exterior and Interior use
210 = 105 degree hold open
211 = 105 degree no hold open
212 = 90 degree hold open
213 = 90 degree no hold open

How to Identify:

- The Model 210 series will be easily identifiable by markings on the top of the closer.
- Dor-O-Matic floor closers are machine gray in color.
- Case Size: 11-23/32" x 5-3/16"

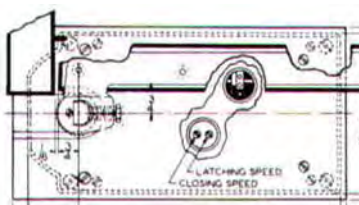


DOR-O-MATIC

Floor Closers

Model 250 Series

Features:



Handed

Single Acting

Offset Pivoted

Exterior and Interior use

250 = 105 degree hold open

251 = 105 degree no hold open

252 = 90 degree hold open

253 = 90 degree no hold open

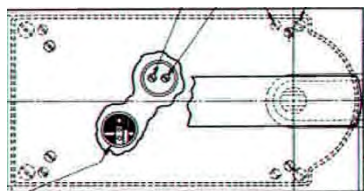
254 = 175 degree hold open

How to Identify:

- The Model 250 series will be easily identifiable by markings on the top of the closer.
- Dor-O-Matic floor closers are machine gray in color.
- Case Size: 12-9/16" x 6-1/2"

Model 260 Series

Features:



Handed

Single Acting

Center Pivoted

Exterior and Interior use

260 = 105 degree hold open

261 = 105 degree no hold open

262 = 90 degree hold open

263 = 90 degree no hold open

How to Identify:

- The Model 260 series will be easily identifiable by markings on the top of the closer.
- Dor-O-Matic floor closers are machine gray in color.
- Case Size: 12-9/16" x 6-1/8"

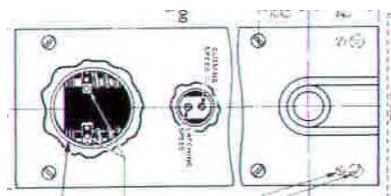


DOR-O-MATIC

Floor Closers

Model 300 Series

Features:



Non-Handed
Double Acting
Center Pivoted
Exterior & Heavy Duty Interior Door Use
300 = 105 degree hold open
301 = 105 degree no hold open
302 = 90 degree hold open
303 = 90 degree no hold open

How to Identify:

- The Model 300 series will be easily identifiable by markings on the top of the closer.
- Dor-O-Matic floor closers are machine gray in color.
- Case Size: 14-9/16" x 5-3/8"

Model 400 Series

Features:

Non-Handed
Double Acting
Center Pivoted
Exterior & Heavy Duty Interior Door Use
400 = 105 degree hold open
401 = 105 degree no hold open
402 = 90 degree hold open
403 = 90 degree no hold open

How to Identify:

- The Model 400 series will be easily identifiable by markings on the top of the closer.
- Dor-O-Matic floor closers are machine gray in color.
- Case Size: 17" x 6-1/16"

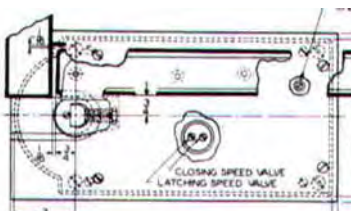


DOR-O-MATIC

Floor Closers

Model 2500 Hydra-Cushion Series

Features:



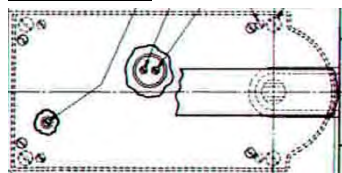
Hydraulic Back Check
Handed
Single Acting
Offset Pivoted
Exterior & Heavy Duty Interior Door Use
2500 = 105 degree hold open
2510 = 105 degree no hold open
2520 = 90 degree hold open
2530 = 90 degree no hold open

How to Identify:

- The Model 2500 Hydra-Cushion series will be easily identifiable by markings on the top of the closer.
- Dor-O-Matic floor closers are machine gray in color.
- Case Size: 12-9/16" x 6-1/8"

Model 2600 Hydra-Cushion Series

Features:



Hydraulic Back Check
Handed
Single Acting
Center Pivoted
Exterior & Heavy Duty Interior Door Use
2600 = 105 degree hold open
2610 = 105 degree no hold open
2620 = 90 degree hold open
2630 = 90 degree no hold open

How to Identify:

- The Model 2600 Hydra-Cushion series will be easily identifiable by markings on the top of the closer.
- Dor-O-Matic floor closers are machine gray in color.
- Case Size: 12-9/16" x 6-1/8"



DOR-O-MATIC

Floor Closers

Models 3200-3300-3400 Thinline Series

Features:



Handed & Non-Handed
Single Acting & Double Acting
Center Pivoted
Exterior & Interior Door Use
3200-3300-3401 = 105 degree hold open
3201-3301-3401 = 105 degree no hold open
3202-3302-3402 = 90 degree hold open
3203-3303-3403 = 90 degree no hold open

How to Identify:

- The Models 3200-3300-3400 Thinline series will be easily identifiable by markings on the top of the closer at the opposite end of the spindle.
- Case Size: 16-1/2" x 5-1/2"

Models 3250-3350-3450 Thinline Series

Features:



Handed
Single Acting
Offset Pivoted
Exterior & Interior Door Use
3250-3350-3451 = 105 degree hold open
3251-3351-3451 = 105 degree no hold open
3252-3352-3452 = 90 degree hold open
3253-3353-3453 = 90 degree no hold open

How to Identify:

- The Models 3250-3350-3450 Thinline series will be easily identifiable by markings on the top of the closer at the opposite end of the spindle.
- Case Size: 16-1/2" x 5-1/2"

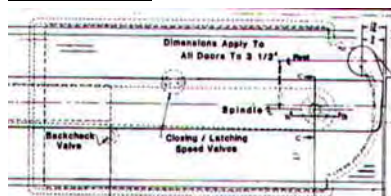


DOR-O-MATIC

Floor Closers

Model 3600 Hydra-Cushion Series

Features:



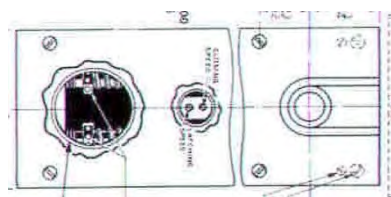
Hydraulic Back Check
Handed
Single Acting
Hinged
Exterior & Heavy Duty Interior Door Use
3600 = 105 degree hold open
3610 = 105 degree no hold open
3620 = 90 degree hold open
3630 = 90 degree no hold open

How to Identify:

- The Model 3600 Hydra-Cushion series will be easily identifiable by markings on the top of the closer.
- Dor-O-Matic floor closers are machine gray in color.
- Case Size: 12-9/16" x 6-1/8"

Model 4000 Series

Features:



Non-Handed
Double Acting
Center Pivoted
Exterior & Heavy Duty Interior Door Use
4000 = 105 degree hold open
4010 = 105 degree no hold open
4020 = 90 degree hold open
4030 = 90 degree no hold open

How to Identify:

- The Model 4000 series will be easily identifiable by markings on the top of the closer.
- Dor-O-Matic floor closers are machine gray in color.
- Case Size: 14-9/16" x 5-3/8"

Model 6300 Series**Features:**

Non-Handed
Double Acting
Offset & Center Pivoted
Exterior and Interior use
Sized Spring
105 Degree Hold Open
105 Degree Non Hold Open

How to Identify:

- The Model 6300 series will be easily identifiable by markings on the top of the closer.
- Kawneer / MAB floor closers are dark bronze in color.

Model 6400 Series**Features:**

Non-Handed
Double Acting
Offset & Center Pivoted
Exterior and Interior use
Sized Spring
105 Degree Hold Open
105 Degree Non Hold Open

How to Identify:

- The Model 6400 series will be easily identifiable by markings on the top of the closer.
- Kawneer / MAB floor closers are dark bronze in color.

Model 7300 Series**Features:**

Non-Handed
Double Acting
Offset & Center Pivoted
Exterior and Interior use
Sized Spring
105 Degree Hold Open
105 Degree Non Hold Open

How to Identify:

- The Model 7300 series will be easily identifiable by markings on the top of the closer.
- Kawneer / MAB floor closers are dark bronze in color.

Model 7500 Series**Features:**

Non-Handed
Double Acting
Offset & Center Pivoted
Exterior and Interior use
Sized Spring
105 Degree Hold Open
105 Degree Non Hold Open

How to Identify:

- The Model 7500 series will be easily identifiable by markings on the top of the closer.
- Kawneer / MAB floor closers are dark bronze in color.

Models 2-4-6 Series

Features:

Handed
Single Acting
Butt Hung
Exterior and Interior use
Sized Spring
No Hold Open

How to Identify:

- The Models 2-4-6 series will be easily identifiable by markings on the top of the closer.
- LCN floor closers are aluminum in color.
- Case Size: 12-1/2" x 5-1/8"

Models 44-46 Series

Features:

Non-Handed
Double Acting
Center Hung
Exterior and Interior use
Sized Spring
No Hold Open

How to Identify:

- The Models 44-46 series will be easily identifiable by markings on the top of the closer.
- LCN floor closers are aluminum in color.

Model 5 Series

Features:

Handed & Non-Handed
Single & Double Acting
Exterior and Interior use
Sized Spring T4-T6-T8
Hold Open & No Hold Open Available
5-100 = LH - 90 degree no hold open
5-105 = RH - 90 degree no hold open
5-110 = LH - 95 degree hold open
5-115 = RH - 95 degree hold open
5-120 = non-handed with 95 degree hold open
5-125 = non-handed with 85 degree no hold open
5-150 = LH - 110 degree hold open
5-155 = RH - 110 degree hold open
5-180 = LH - 100 degree no hold open
5-185 = RH - 100 degree no hold open

How to Identify:

- The Model 5 series will be easily identifiable by markings on the top of the closer.
- R&K floor closers are blue in color.
- Case Size: 6" x 6"

Model 10 Series

Features:

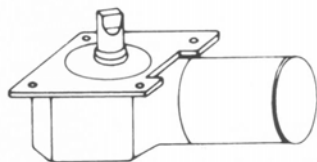
Handed & Non-Handed
Single & Double Acting
Exterior and Interior use
Sized Spring T4-T6-T8
Hold Open & No Hold Open Available
10-100 = LH - 90 degree no hold open
10-105 = RH - 90 degree no hold open
10-110 = LH - 95 degree hold open
10-115 = RH - 95 degree hold open
10-120 = non-handed with 95 degree hold open
10-125 = non-handed with 85 degree no hold open
10-150 = LH - 110 degree hold open
10-155 = RH - 110 degree hold open
10-180 = LH - 100 degree no hold open
10-185 = RH - 100 degree no hold open

How to Identify:

- The Model 10 series will be easily identifiable by markings on the top of the closer.
- R&K floor closers are blue in color.
- Closer Size: 8-1/2" x 6-1/4"

Duo-Check Series

Features:



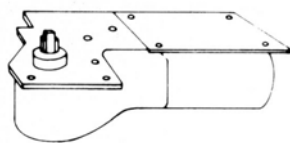
Old Style & New Style
Non-Handed
Center Hung
Double Acting
Interior use
Sized Spring 10-12-15-16
Hold Open & No Hold Open Available
No. 10 = old style or new Style
90 degree hold open
No. 12 = old style or new style
105 degree no hold open
No. 15 = old style or new Style
90 degree hold open
No. 16 = old style or new style
105 degree no hold open

How to Identify:

- The Duo-Check series will be identifiable by the plate size and the shape of the shaft.
- Rixson floor closers are dark bronze in color.
- Plate Size: 4-1/2" x 8-7/8"
- Old style shaft: Round w/ pin
- New style shaft: Rectangle

Uni-Check Series

Features:



Handed
Offset Hung
Single Acting
Interior use
Sized Spring 65-66-67-68
Hold Open & No Hold Open Available
No. 65 = 15-85-90-100-120-160 degree hold open or no hold open
No. 66 = 15-85-90-100-120-160 degree hold open or no hold open
No. 67 = 85-90-100-120-160 degree hold open or no hold open
No. 68 = 85-90-100-120-160 degree hold open or no hold open

How to Identify:

- The Uni-Check series will be identifiable by the odd plate size.
- Rixson floor closers are dark bronze in color.
- Plate Size: 10-9/64" x 2-27/32" (at narrowest point)

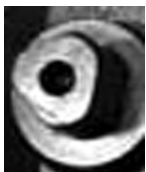
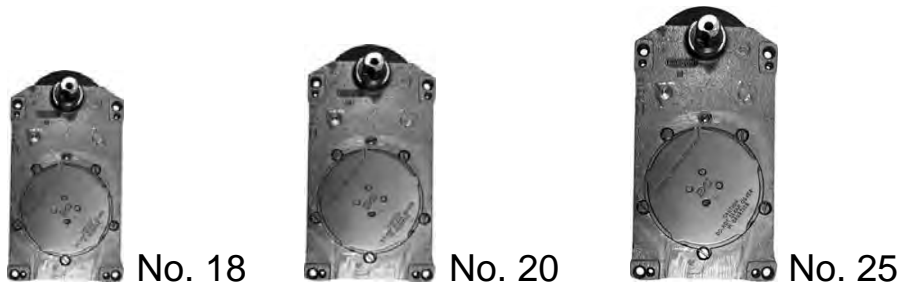
Models 18-20-25 Series

Features:

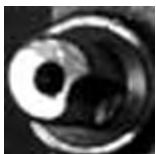
Handed
 Offset Hung
 Single Acting
 Interior and Exterior use
 Hold Open & No Hold Open Available
 Old Style and New Style
 No. 18 = Interior use
 180 degree no hold open
 "Keyed" spindle
 No. 20 = Interior and exterior use
 180 degree no hold open
 Old style and new style
 No. 25 = Interior and exterior use
 180 degree no hold open
 Old style and new style

How to Identify:

- The Models 18-20-25 series will be identifiable by the case size and the shape of the shaft.
- Rixson floor closers are dark bronze in color.
- Old style shaft: "Keyed" spindle
- New style shaft: Triangle
- Case Sizes: 18 - 20 - 25



new style shaft (20 & 25)



old style shaft

Models 21-26 Series

Features:

Handed
Center Hung
Single Acting
Interior and Exterior use
Hold Open & No Hold Open Available
Old Style and New Style
No. 21 = Interior use and exterior use
No. 26 = Interior and exterior use

How to Identify:

- The Models 21-26 series will be identifiable by the case size and the shape of the shaft.
- Rixson floor closers are dark bronze in color.
- Case Sizes: 21: 10-3/32" x 5" 26: 11-1/8" x 5-7/8"

Model 27 Series

Features:

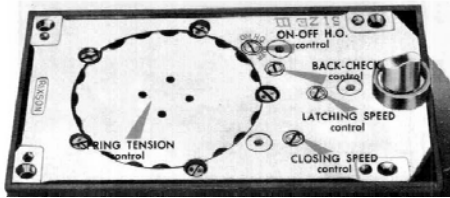
Handed
Offset Hung
Single Acting
Interior and Exterior use
Hold Open, No Hold Open & Selective Available
No. 27 = Interior use and exterior use
85-90-105 degree hold open or non hold open available
85-90-105 degree selective hold open available

How to Identify:

- The Model 27 series will be identifiable by the case size and the shape of the shaft.
- Rixson floor closers are dark bronze in color.
- Case Size: 27: 11-1/8" x 5-7/8"

Model 28 Series

Features:



Handed
 Center Hung
 Single Acting
 Interior and Exterior use
 Hold Open, No Hold Open & Selective
 No. 28 = Interior use and exterior use
 85-90-105 degree hold open or non hold open
 85-90-105 degree selective hold open available

How to Identify:

- The Model 28 series will be identifiable by the case size and the shape of the shaft.
- Rixson floor closers are dark bronze in color.
- Case Size: 28: 11-18" x 5-7/8"

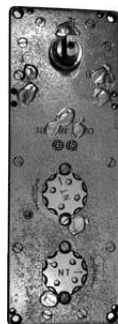
Models 30-40 Series

Features:

Non Handed
 Center Hung
 Double Acting
 Interior and Exterior use
 Hold Open and No Hold Open
 No. 30 = Interior use and exterior use
 90-100 degree hold open available
 No. 40 = Interior and exterior use
 90-100 degree hold open available

How to Identify:

- The Models 30-40 series will be identifiable by the case size and the shape of the shaft.
- Rixson floor closers are dark bronze in color.
- Case Sizes: No. 30: 14-9/16" x 5-3/8" No. 40: 17" x 6-1/16"



No. 30



No. 40

Models 50-51-53 Series

Features:

Handed and Non Handed
 Center Hung and Offset Hung
 Single Acting
 Interior and Exterior use
 Hold Open and No Hold Open

No. 5013-14-15 = Interior use and exterior use
 Center hung
 Single acting
 Handed
 Non hold open or 90 or 105 degree hold open
 Sized spring

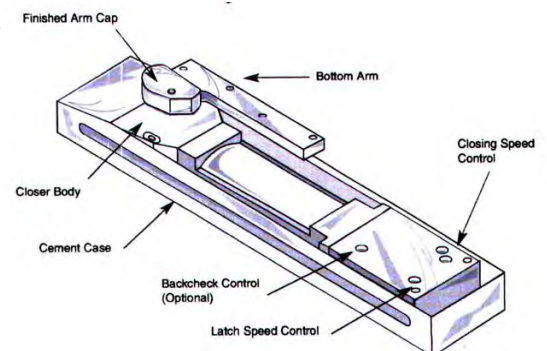
No. 5023-24-25 = Interior use and exterior use
 Center hung
 Double acting
 Handed
 Non hold open or 90 or 105 degree hold open
 Sized spring

No. 5103-04-05 = Interior and exterior use
 $\frac{3}{4}$ " offset hung
 Single acting
 Handed
 Non hold open or 90-105-180 degree hold open
 Sized spring

No. 5303-04-05 = Interior use
 Independently hung
 Single Acting
 Handed
 No hold open
 Sized spring

How to Identify:

- The Models 50-51-53 series will be identifiable by the case
- Rixson floor closers are dark bronze in color.
- Case Sizes: 19-1/8" x 4-1/2"



Surface Applied

Corbin

Page 21

Ilco

Page 27

Rixson

Page 36

Corbin/Russwin

Page 22 ~ 23

Kawneer / Mab

Page 28

Russwin

Page 37

Dorma/TACO

Page 24

LCN

Page 29 ~ 31

Sargent

Page 38 ~ 40

Dorma

Page 25

Lockwood

Page 32

Tubelite

Page 41

Dor-O-Matic

Page 26

Norton

Page 33 ~ 35

Yale

Page 42 ~ 43

Models 2-6 Series

Features:



Pot-Belly Traditional Style
Single Acting
Easy Hand Reversing
Single Valve Speed Adjustment
No Hold Open
Sized Spring (2-6)
picture does not indicate style

How to Identify:

- The Models 2-6 series will be identifiable by the mounting hole pattern and/or number on the end plug.
- Shaft Shape: Round with one straight side
- Mounting Hole Pattern: No. 2: No. 3: No. 4: No. 5: No. 6:

Models 102-105 Series

Features:



Pot-Belly Traditional Style
Single Acting
Easy Hand Reversing
Single Valve Speed Adjustment
Hold Open
Sized Spring (2-6)
picture does not indicate style

How to Identify:

- The Models 102-105 series will be identifiable by the mounting hole pattern and/or number on the end plug.
- Shaft Shape: Round with one straight side
- Mounting Hole Pattern: No. 102: No. 103: No. 104: No. 105:

Model 70 Series

Features:

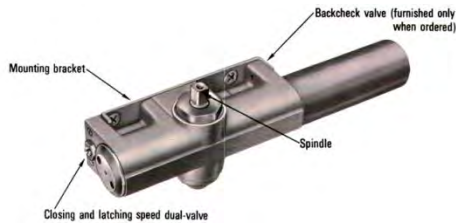


Pot-Belly Traditional Style
Single Acting
Easy Hand Reversing
Single Valve Speed Adjustment
Sized Spring (3-5)

How to Identify:

- The Model 70 series spring size will be identifiable by the number stamped on the case.

Features:



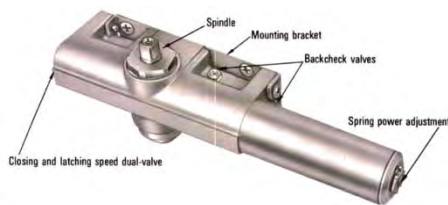
Model 100 Series

Streamline Style
Non Handed
Sized Spring (2-5)

How to Identify:

- The Model 100 series spring size will be identifiable by the number stamped near the end plug.
- Overall length = 10"

Features:



Models 110-120 Series

Streamline Style
Non Handed
Sized Spring (2-5) on 110 Series
Adjustable Spring Tension on 120 Series

How to Identify:

- The Models 110-120 series spring size will be identifiable by the number stamped near the end plug.
- Overall length = 11"

Features:



Model 400 Series

Single Acting
Handed
Sized Spring (3-4)
Hold Open or Non Hold Open

How to Identify:

- The Model 400 series spring size will be identifiable by the number stamped on the case.

Model 500 Series

Features:



Single Acting
Handed
Sized Spring (1-4)
Surface Applied or Concealed In Door

How to Identify: (L4 SHOWN)

- The Model 500 series spring size will be identifiable by the number stamped on the plug near the shaft.

Models 3-5 Series

Features:

Pot-Belly Traditional Style
Single Acting
Easy Hand Reversing
Sized Spring (3-5)

How to Identify:

- The Models 3-5 series spring size will be identifiable by the number stamped on the end plug.

Model 40 Series

Features:

Streamline Style
Non Handed
Sized Spring

How to Identify:

- The Model 40 series spring size will be identifiable by the number stamped on the end of the closer.



Surface Applied

Model 610 Series

Features:

Streamline Style
Non Handed
Sized Spring (2-6)

How to Identify:

- The Model 610 series spring size will be identifiable by the number stamped on the end of the closer.
- 8-1/4" CTC

Model 650 Series

Features:

Streamline Style
Non Handed
Adjustable Spring Tension
650 = Size 3-6
651 = Size 1-4

How to Order:

How to Identify:

- The Model 650 series spring size will be identifiable by the number stamped on the end of the closer.

Model 7600 Series

Features:

Streamline Style
Non Handed
Sized and Adjustable Spring Tension

How to Identify:

- The Model 7600 series spring size will be identifiable by the number stamped on the end of the closer.

Model 7800 Series

Features:

Streamline Style
Non Handed
Sized and Adjustable Spring Tension

How to Identify:

- The Model 7800 series spring size will be identifiable by the number stamped on the end of the closer.



DOR-O-MATIC

Surface Applied

Model “Fyre-Eye” Series

Features:

Streamline Style
Non Handed
DFE-IIIx115v = 115vac
DFE-IIIx12v = 12vdc

How to Identify:

- The Model “Fyre-Eye” series will be identifiable by sticker on the tube

Model SC60 Series

Features:

Streamline Style
Non Handed
Adjustable and Sized Spring Tension (4-5)
Common Hole Pattern
SC60 = 2-5 spring size
SC61 = 1-4 spring size
SC64 = size 4 spring size
SC65 = size 5 spring size

How to Identify:

- The Model SC60 series spring size will be identifiable by the number stamped on the end of the closer.

Model SC80 Series

Features:

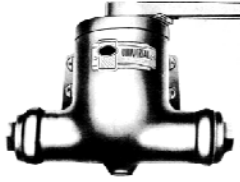
Streamline Style
Non Handed
Sized Spring (4-5)
Common Hole Pattern
SC80 = 2-5 spring size
SC81 = 1-4 spring size

How to Identify:

- The Model SC80 series spring size will be identifiable by the number stamped on the end of the closer.

Model 20 Series

Features:



Pot-Belly Traditional Style
Single Acting
Easy Hand Reversing
Sized Spring (3-5)

How to Identify:

- The Model 20 series will be identifiable by the mounting hole pattern and/or number on the end plug.
- Shaft Shape: Rectangle with rounded ends
- Mounting Hole Pattern:

Model 200 Series

Features:



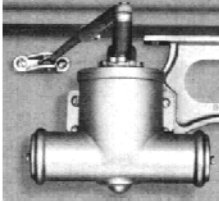
Streamline Style
Mounting Bracket
Hold Open or Non Hold Open
Double Acting
Non Handed
Sized Spring Tension (4-5)
204NHO = Size 4 spring with no hold open
204HO = Size 4 spring with hold open
205NHO = Size 5 spring with no hold open
205HO = Size 5 spring with hold open

How to Identify:

- The Model 20 series spring size will be identifiable by the number located on the end plug of the closer.
- Closer with spring on bottom of closer will have hold open feature. If no spring, then no hold open.

Traditional Series

Features:



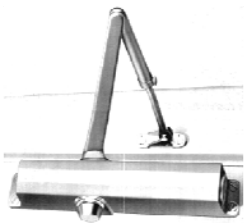
Pot-Belly Traditional Style
Single Acting
Easy Hand Reversing
Sized Spring (A-F)

How to Identify:

- The Traditional series spring size will be identifiable by the letter located on the end plug of the closer.

Models 1040-1050 Series

Features:



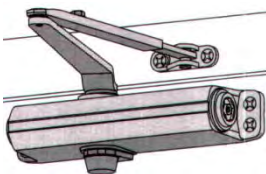
Streamline Style
Non Handed
Sized Spring Tension (2-5)
1040 series = No Backcheck
1050 series = With Backcheck

How to Identify:

- The Models 1040-1050 series spring size will be identifiable by the number stamped on the packing nut located at the shaft of the closer.

Model 1070 Series

Features:



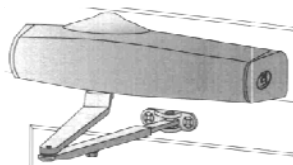
Streamline Style
Non Handed
Sized Spring Tension (4-5)
Adjustable Spring Tension (1071)

How to Identify:

- The Model 1070 series spring size will be identifiable by the number stamped on the packing nut located at the shaft of the closer.

Model 1370 Series

Features:



Streamline Style
 Non Handed
 Adjustable Spring Tension (1-5)
 Mounting Bracket Installation

How to Identify:

- The Model 1370 series size will be identifiable by the number stamped on the packing nut located at the shaft of the closer.

Models 1460-1461 Series

Features:



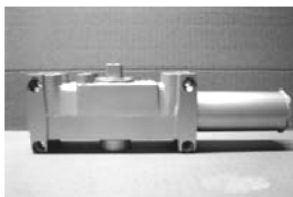
Streamline Style
 Non Handed
 Adjustable Spring Tension
 Plastic Cover

How to Identify:

- The Models 1460-1461 series will be identifiable by the number stamped on the packing nut located at the shaft of the closer.

Models 4010/4020/4110 Series

Features:



Streamline Style
 Handed
 Sized Spring Tension (2-6)
 Adjustable Spring Tension (4011/4021/4111)
 Plastic Cover
 4010 Series = Mounted on hinge face of door
 4020 Series = Mounted on top jamb
 4110 Series = Parallel mount

How to Identify:

- The Models 4010/4020/4110 series will be identifiable by the number stamped on the packing nut located at the shaft of the closer.
- Identification numbers can also be found on stickers on spring tube or stamped on spring tube.

Models 4030/4130 Series

Features:



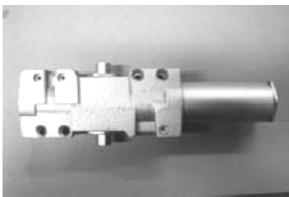
Streamline Style
Handed
Sized Spring Tension (2-4)
Plastic Cover
4030 Series = Mounted on hinge face of door
4130 Series = Parallel mount

How to Identify:

- The Models 4030/4130 series will be identifiable by the number stamped on the packing nut located at the shaft of the closer.

Models 4040/4041 Series

Features:



Streamline Style
Non Handed
Adjustable Spring Tension (1-6)
Plastic Cover
4040 = Old style
4041 = New style

How to Identify:

- The Models 4040/4041 series will be identifiable by the number stamped on the packing nut located at the shaft of the closer.
- Identification numbers can also be found on stickers on spring tube or stamped on spring tube.

Traditional Series

Features:



Pot-Belly Traditional Style
Single Acting
Easy Hand Reversing
Sized Spring (B-E)

How to Identify:

- The Traditional series will be identifiable by the letter stamped on the end plug.

Traditional Series

Features:



Pot-Belly Traditional Style
Single Acting
Easy Hand Reversing
Sized Spring (B-F)
Old-Style and New Style

How to Identify:

- The Traditional series will be identifiable by the letter stamped on the end plug.
- Old Style: Rectangle shaped shaft
- New Style: Square shaft w/ shaft height of ¼" or ½"

Traditional "78" Series

Features:



Pot-Belly Traditional Style
Single Acting
Easy Hand Reversing
Sized Spring (B/D-E/F)

How to Identify:

- The Traditional "78" series will be identifiable by the letters stamped near the mounting holes.

Model 1500 Series

Features:

Streamline Style
Non Handed
Sized Spring Tension (3-5)

How to Identify:

- The Model 1500 series spring size will be identifiable by the number stamped on the end of the closer.

Model 1600 Series

Features:

Streamline Style
Non Handed
Sized Spring Tension (2-6)
Adjustable Spring Tension (1-4) (3-6)
Old and New Style



How to Identify:

- The Model 1600 series spring size will be identifiable by the number stamped on the end of the closer.
- Old Style: Single valve speed adjustment
- New Style: Dual valve speed adjustment

Model 7500 Series

Features:

Streamline Style
Non Handed
Adjustable Spring Tension (B/F) (2-6)



How to Identify:

- The Model 7500 series spring size will be identifiable by the number stamped on the end of the closer (B/F) (2-6).

Model 7700 Series

Features:

Streamline Style
Non Handed
Sized Spring Tension (3-6)



How to Identify:

- The Model 7700 series spring size will be identifiable by the number stamped on the end of the closer (3-6).

Model L/R 750 Series

Features:

Corner Mount
Handed
Sized Spring Tension (4-5)



How to Identify:

- The Model 7750 series spring size will be identifiable by the number stamped on the end of the closer.

Model 8000 Series

Features:

Streamline Style
Non Handed
Sized Spring Tension (1-6)
Available With Backcheck



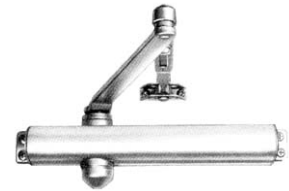
How to Identify:

- The Model 8000 series spring size will be identifiable by the number stamped on the end of the closer (1-6).

Model 8100 Series

Features:

Streamline Style
Non Handed
Adjustable Spring Tension (B/F) (2-6)
Backcheck is Standard



How to Identify:

- The Model 8100 series spring size will be identifiable by the number stamped on the end of the closer (1-4) (2-6).

Model L/R700 Series

Features:

Streamline Style
Handed
Sized Spring Tension (2-6)
Old Style and New Style



How to Identify:

- The Model L/R700 series spring size will be identifiable by the number stamped on case of the closer.
- Old Style: double 'D' shaft New Style: square shaft

Model M2020 Series

Features:

Streamline Style
Non Handed
Adjustable Spring Tension (2-6)
Old Style and New Style

How to Identify:

- The Model M2020 series spring size will be identifiable by the number stamped on the end of the closer.
- Old Style: Notched square shaft (Short shaft – cast iron body)
- New Style: square shaft (Long shaft – cast iron or alum body)
- CTC: 12-3/4" x 1-1/8"

Model M2220 Series

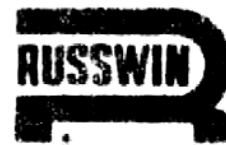
Features:

Streamline Style
Non Handed
Adjustable Spring Tension (2-6)



How to Identify:

- The Model M2220 series spring size will be identifiable by the number stamped on the end of the closer.
- Aluminum closer body
- Old Style: Notched square shaft New Style: square shaft
- CTC: 11-1/8" x 1-1/8"
- M2220 (1230) Sargent body or M2220(8000) Norton body



Surface Applied

Traditional Series

Features:

Pot-Belly Traditional Style
Single Acting
Easy Hand Reversing
Sized Spring (B-E)



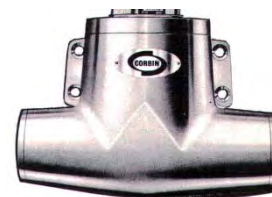
How to Identify:

- The Traditional series will be identifiable by the letter stamped on the end plug.

Traditional “mod” Series

Features:

Pot-Belly Traditional Style
Single Acting
Easy Hand Reversing



How to Identify:

- The Traditional “mod” series will be identifiable by the series of numbers and letters stamped on the bottom of the closer.

Model 90 Series

Features:

Streamline Style
Non Handed
Sized Spring Tension (2-5)

How to Identify:

- The Model 90 series spring size will be identifiable by the number stamped on the end of the closer.

Traditional Series

Features:

Pot-Belly Traditional Style
Single Acting
Easy Hand Reversing
Sized Spring 42-43-44-45
Models C-D-E-V



How to Identify:

- The Traditional series will be identifiable by the numbers and letters stamped on the top of the closer.

Model 50 Series

Features:

Streamline Style
Handed
Sized Spring Tension (3-5)

How to Identify:

- The Model 50 series spring size will be identifiable by the number stamped on the fill plug of the closer.
- Single barrel spring tube.

Model 70 Series

Features:

Streamline Style
Handed
Sized Spring Tension (3-5)

How to Identify:

- The Model 70 series spring size will be identifiable by the number stamped on the fill plug of the closer.
- Double barrel spring tube.

Model 150 Series

Features:

Streamline Style
Handed
Backcheck Adjustment
Sized Spring Tension (3-5)

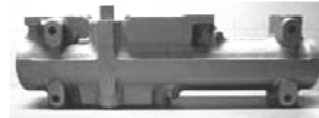
How to Identify:

- The Model 150 series spring size will be identifiable by the number stamped on the fill plug of the closer.
- Single barrel spring tube.

Model 250 Series

Features:

Streamline Style
Handed
Adjustable Spring Tension



How to Identify:

The Model 250 series spring size will be identifiable by the number stamped on the fill plug of the closer.

Model 1220 Series

Features:

Streamline Style
Non-Handed
Sized Spring Tension (3-5)

How to Identify:

- The Model 1220 series spring size will be identifiable by the number stamped on the end plug of the closer.

Model 1230 Series

Features:

Streamline Style
Non-Handed



How to Identify:

- The Model 1230 series spring size will be identifiable by the number stamped on the end plug of the closer.

Model 1240 Series

Features:

Streamline Style
Non-Handed
Sized Spring Tension (3-5)

How to Identify:

- The 1240 series spring size will be identifiable by the number stamped on the end plug of the closer.

Model 1250 Series

Features:

Streamline Style
Non-Handed



How to Identify:

- The Model 1250 series spring size will be identifiable by the number stamped on the end plug of the closer.

Model 200 Series

Features:



Streamline Style
Non-Handed
Available With or Without Backcheck
Old Style & New Style

How to Identify:

- The Model 200 series will be identifiable by the mounting hole dimensions
- Number of speed adjustments.

Model 40 Series

Features:

Surface Applied
Handed
Sized Spring 42-43-44-45
Backcheck Adjustment

How to Identify:

- The Model 40 series spring size will be identifiable by the numbers stamped on the cover bracket of the closer.
- Concealed spring tube.

Model 50 Series

Features:

Surface Applied
Non-Handed
Sized Spring 52-53-54-55
Backcheck Adjustment
Old Style & New Style

How to Identify:

- The Model 50 series spring size will be identifiable by the numbers stamped on the end of the closer.
- Old Style: 1 valve speed adjustment
- New Style: 2 valve speed adjustment

Model 60 Series

Features:

Concealed 'in-a-door' Closer
Handed
Sized Spring 62-63-64-65
Backcheck Adjustment

How to Identify:

- The Model 60 series spring size will be identifiable by the numbers stamped on the cover bracket of the closer.
- Visible spring tube.

Traditional 70 Series

Features:



Pot-Belly Traditional Style
Single Acting
Easy Hand Reversing
Sized Spring 71-72-73-74-75
Old Style & New Style

How to Identify:

- The Traditional 70 series will be identifiable by the numbers and letters stamped on the end plug of the closer.
- Old Old Style: Double 'd' Shaft
- Old Style: Pie-shaped shaft
- New Style: Square shaft – ½" and ¼" height

Model 80 Series

Features:

Surface Applied
Non-Handed
Sized Spring 83-84-85-86
Backcheck Adjustment

How to Identify:

- The Model 80 series spring size will be identifiable by the numbers stamped on the end of the closer.

Traditional 90 Series

Features:



Pot-Belly Traditional Style
Single Acting
Easy Hand Reversing
Sized Spring 92-93-94-95

How to Identify:

- The Traditional 90 series will be identifiable by the numbers and letters stamped on the top of the closer.

Overhead Concealed

Dorma

Page 45

Dor-o-matic

Page 45 ~ 49

Jackson

Page 50

Kawneer

Page 51

LCN

Page 52 ~ 54

MAB

Page 55

Norton

Page 56

R&K

Page 57

Rixson

Page 58



Overhead Concealed

Model RTS 76 Series

Features:

Non Handed
Size 3 Spring Tension
90 and 105 Degree Opening
Non Hold Open and Hold Open Available

How to Identify:

- The Model RTS 76 series will be identifiable by the number stamped on the body of the closer.
- Diamond shaped shaft.

Model RTS 85 Series

Features:



Non Handed
Size 3 Spring Tension
90 and 105 Degree Opening
Non Hold Open and Hold Open Available

How to Identify:

- The Model RTS 85 series will be identifiable by the number stamped on the body of the closer.
- Square shaft.

Model RTS 88 Series

Features:

Non Handed
Size 3 Spring Tension
90 and 105 Degree Opening
Non Hold Open and Hold Open Available

How to Identify:

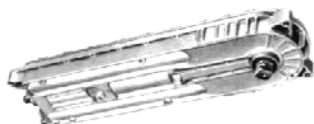
- The Model RTS 88 series will be identifiable by the number stamped on the body of the closer.
- Square shaft.



DOR-O-MATIC

Overhead Concealed

Model 1200/12000 “Headliner” Series



Double Acting
Interior Door Use
Center Hung
1200/12000 Light duty = 105 degree hold open
1201/12010 Light Duty = 105 degree no hold open
1202/12020 Light Duty = 90 degree hold open
1203/12030 Light Duty = 90 degree no hold open

How to Identify:

- The Model 1200 “Headliner” series will be easily identifiable by markings on the top of the closer at the opposite end of the spindle.
- Square shaft.

Model 1300/13000 “Headliner” Series

Features:



Non-Handed
Double Acting
Exterior & Interior Door Use
Center Hung
1300/13000 Medium duty = 105 degree hold open
1301/13010 Medium Duty = 105 degree no hold open
1302/13020 Medium Duty = 90 degree hold open
1303/13030 Medium Duty = 90 degree no hold open

How to Identify:

- The Model 1300 “Headliner” series will be easily identifiable by markings on the top of the closer at the opposite end of the spindle.
- Square shaft.

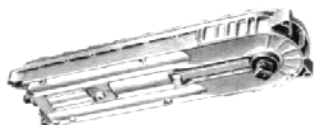


DOR-O-MATIC

Overhead Concealed

Model 1400/14000 “Headliner” Series

Features:



Non-Handed
Double Acting
Exterior & Interior Door Use
Center Hung
1400/14000 Heavy duty = 105 degree hold open
1401/14010 Heavy Duty = 105 degree no hold open
1402/14020 Heavy Duty = 90 degree hold open
1403/14030 Heavy Duty = 90 degree no hold open

How to Identify:

- The Model 1400 “Headliner” series will be easily identifiable by markings on the top of the closer at the opposite end of the spindle.
- Square shaft.

Model 2200/2250 “Headliner” Series

Features:

Non-Handed
Double Acting
Interior Door Use
Center Hung
2200/2250 Light duty = 105 degree hold open
2201/2251 Light Duty = 105 degree no hold open
2202/2252 Light Duty = 90 degree hold open
2203/2253 Light Duty = 90 degree no hold open

How to Identify:

- The Model 2200 “Headliner” series will be easily identifiable by markings on the top of the closer at the opposite end of the spindle.
- 4-prong shaft.



DOR-O-MATIC

Overhead Concealed

Model 2300/2350 “Headliner” Series

Features:

Non-Handed
Double Acting
Exterior & Interior Door Use
Center Hung
2300/2350 Medium duty = 105 degree hold open
2301/2351 Medium Duty = 105 degree no hold open
2302/2352 Medium Duty = 90 degree hold open
2303/2353 Medium Duty = 90 degree no hold open

How to Identify:

- The Model 2300 “Headliner” series will be easily identifiable by markings on the top of the closer at the opposite end of the spindle.
- 4-prong shaft.

Model 22000/22500 “Headliner” Series

Features:



Non-Handed
Double Acting
Interior Door Use
Center Hung
22000/22500 Light duty = 105 degree hold open
22010/22510 Light Duty = 105 degree no hold open
22020/22520 Light Duty = 90 degree hold open
22030/22530 Light Duty = 90 degree no hold open

How to Identify:

- The Model 22000 “Headliner” series will be easily identifiable by markings on the top of the closer at the opposite end of the spindle.
- Rectangle shaft.



DOR-O-MATIC

Overhead Concealed

Model 23000/23500 “Headliner” Series

Features:



Non-Handed
Double Acting
Exterior & Interior Door Use
Center Hung
23000/23500 Medium duty = 105 degree hold open
23010/23510 Medium Duty = 105 degree no hold open
23020/23520 Medium Duty = 90 degree hold open
23030/23530 Medium Duty = 90 degree no hold open

How to Identify:

- The Model 23000 “Headliner” series will be easily identifiable by markings on the top of the closer at the opposite end of the spindle.
- Rectangle shaft.

Model 20-330 Series

Features:



Non-Handed
Double Acting
Exterior & Interior Door Use
Allows For 90 or 105 Degree Opening
Hold Open or No Hold Open
Light Duty - Regular Duty - Heavy Duty
Single and Dual Valve Available

How to Identify:

- The Model 20-330 series function will be easily identifiable by markings on the top of the spindle.
- Spring size (duty) will be determined by size of door.

Model M-2 Series

Features:



Non-Handed
Double Acting
Exterior & Interior Door Use
Allows For 90 or 105 Degree Opening
Hold Open or No Hold Open

How to Identify:

- The Model M-2 series function will be identified by stamped numbers or sticker on the closer body.
- Spring size will be determined by size of door.
- The M-2 will have an exposed oil reservoir near spring tube.

Spring size: 2 2 3 2 4 3 5 4 6 5
 Center Offset Center Offset Center Offset Center Offset Center Offset

<u>Kawneer OHC Chart</u>	24"	24"	30"	30"	36"	36"	42"	42"	48"	48"
No Hold open	37-621	37-621	37-624	37-621	37-627	37-624	37-630	37-627	37-633	37-630
90 degree Hold open	37-622	37-623	37-625	37-623	37-628	37-626	37-631	37-629	37-634	37-632
105 degree Hold open	37-623	N/A	37-626	N/A	37-629	N/A	37-632	N/A	37-635	N/A

Arms: Center hung #038-165 (End-load) Offset #141-011 (Arm & track pkg) Strap Mounting kit for the M-3 047-254

Model M-3 'HUSKY' Series

Features:



Non-Handed
Double Acting
Exterior & Interior Door Use
Allows For 90 or 105 Degree Opening
Hold Open or No Hold Open

How to Identify:

- The Model M-3 'Husky' series function will be identified by stamped numbers or sticker on the closer body.
- Spring size will be determined by size of door.
- The M-3 'Husky' will have a concealed oil reservoir in closer body

Model 'HUSKY II' Series

Features:



Non-Handed
Double Acting
Exterior & Interior Door Use
Allows For 90 or 105 Degree Opening
Hold Open or No Hold Open

How to Identify:

- The Model 'Husky II' series function will be identified by stamped numbers on closer spindle.
- Spring size will be determined by size of door.

<u>Kawneer OHC Chart</u>	24"	30"	36"	42"	48"
105 degree No Hold open	50-621	50-624	50-627	50-630	50-633
90 degree Hold open	50-622	50-625	50-628	50-631	50-634
105 degree Hold open	50-623	50-626	50-629	50-632	50-635

Model 200 Series

Features:

Handed
Sized Spring (4-6)

How to Identify:

- The Model 200 series model number will be identifiable by markings on the closer body.

Model 300 Series

Features:

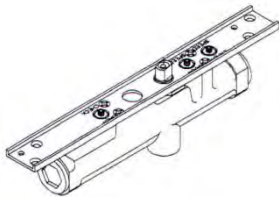
Concealed in Door
Handed
Exterior & Interior Door Use
2-Valve Speed Adjustment
Old Style Shaft
Sized Spring Tension

How to Identify:

- The Model 300 series model number will be easily identifiable by markings on the closer bracket and/or packing nut at spindle.
- Old style shaft: Double 'D' shape with horizontal arm mount.

Model 330 Series

Features:



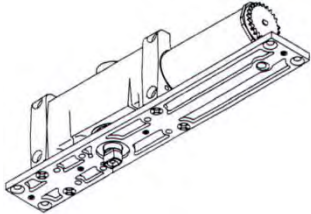
Concealed in Door
Handed
Exterior & Interior Door Use
3-Valve Speed Adjustment
New Style Shaft
Sized Spring Tension

How to Identify:

- The Model 330 series model number will be easily identifiable by markings on the closer bracket and/or packing nut at spindle.
- New style shaft: Double 'd' shaft with vertical arm mount.

Model 2010 Series

Features:



Track Closer
Handed
Exterior & Interior Door Use
3-Valve Speed Adjustment
Sized Spring (2013-2016)
Adjustable Spring Tension (2011)

How to Identify:

- The Model 2010 series model number will be easily identifiable by markings on the packing nut at spindle or on spring tube.

Model 2030 Series

Features:



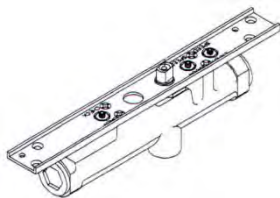
Track Closer
Handed
Exterior & Interior Door Use
3-Valve Speed Adjustment
Sized Spring (2033-2036)

How to Identify:

- The Model 2030 series spring size will be identifiable by markings on the closer body.
- Double 'D' shaft. (Short shaft)

Model 3130 Series

Features:



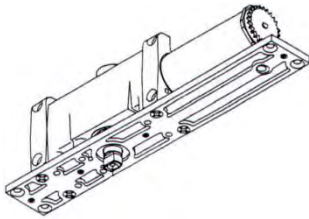
Concealed in Door
Track Closer
Handed
Exterior & Interior Door Use
Sized Spring Tension
3-Valve Speed Adjustment
New Style Shaft

How to Identify:

- The Model 3130 series model number will be easily identifiable by markings on the closer bracket and/or packing nut at spindle.
- New style shaft: Double 'd' shaft with vertical arm mount.

Model 5010 Series

Features:



Handed
Exterior & Interior Door Use
3-Valve Speed Adjustment
Sized Spring (5013-5016)

How to Identify:

- The Model 5010 series model number will be easily identifiable by markings on the packing nut at spindle or on spring tube.

Model 5030 Series

Features:



Handed
Exterior & Interior Door Use
3-Valve Speed Adjustment
Sized Spring (5033-5036)

How to Identify:

- The Model 5030 series spring size will be identifiable by markings on the closer body.
- Double 'D' shaft. (Long shaft)

Overhead Concealed**Model 5300 Series****Features:**

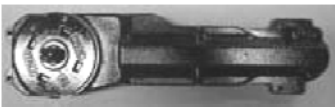
Non-Handed
Double Acting
Exterior & Interior Door Use
Allows For 90 or 105 Degree Opening
Hold Open or No Hold Open

**How to Identify:**

- The Model 5300 series model number will be identified by stamped numbers on the side of the closer body.
- Diamond shaped shaft.

Model 5600 Series**Features:**

Non-Handed
Double Acting
Exterior & Interior Door Use
Allows For 90 or 105 Degree Opening
Hold Open or No Hold Open
Light-Medium-Heavy Duty Spring Sizes

**How to Identify:**

- The Model 5600 series model number will be identified by stamped numbers on the end plug of the closer body.
- Square shaft.

Model L/R900 Series

Features:

Concealed In Door
Handed
Sized Spring Tension (3-5)
Old Style and New Style

How to Identify:

- The Model L/R900 series spring size will be identifiable by the number stamped on the case of the closer.
- Old Style: double 'D' shaft New Style: square shaft

Model 7900 Series

Features:

Handed
Sized Spring Tension (4-6)



How to Identify:

- The Model 7900 series spring size will be identifiable by the number stamped on the end of the closer (4-6).

Model C-90 Series

Features:



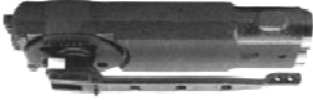
Non-Handed
End Load or Side Load Arm Application
Available With Non-Hold Open or Selective Hold Open

How to Identify:

- The Model C-90 series will be blue in color and springs (2) will be visible.
- Side Load Application: Diamond shaped shaft
- End Load Application: Square shaft

Model 608 Series

Features:



Non-Handed
Double Acting
Exterior & Interior Door Use
Allows For 90 or 105 Degree Opening
Hold Open or No Hold Open
Light Duty - Regular Duty - Heavy Duty
Single Valve Speed Adjustment

How to Identify:

- The Model 608 series function will be easily identifiable by markings on the top of the spindle.
- Spring size (duty) will be determined by size of door.

Model 700 Series

Features:



Handed
Single Acting
Exterior & Interior Door Use
Allows For 90 or 105 Degree Opening
Hold Open or No Hold Open
Dual Valve Speed Adjustment w/ Backcheck
Sized Spring (706-708)

How to Identify:

- The Model 700 series function will be identifiable by markings on the cover plate.

Model 800 Series

Features:



Non-Handed
Double Acting
Exterior & Interior Door Use
Allows For 90 or 105 Degree Opening
Hold Open or No Hold Open
Dual Valve Speed Adjustment
Sized Spring (806-808)

How to Identify:

- The Model 800 series function will be identifiable by markings on the cover plate.