





## Surface Closers

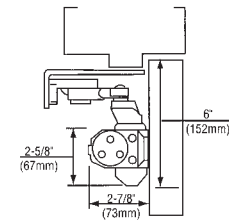
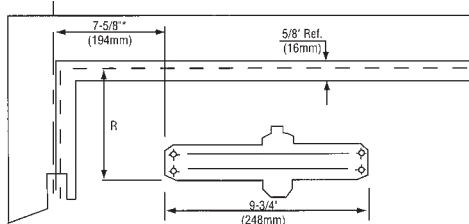
Precision Architectural Closers are designed for heavy duty commercial use. With an adjustable power tension, these closers can handle the lightest ADA Compliant jobs, to the heavy high traffic applications. Our closers only come in Grade 1 and have been tested to exceed 2 million cycles.



### 615RWPA

The industry's most popular hole pattern, the 615 is the most diverse 9-1/16" closer on the market. It provides adjustments for Sweep, Back Check, Latch and also an Adjustable spring tension of 1-5.

- Grade 1 ANSI A156.4
- Meets and exceeds ADA requirements ANSI 117.1
- Tri Packed
- Adjustable Back check sweep and latching speeds
- Power Adjustable 1-5
- Self-Drilling screws
- Cover included
- UL Listed
- 9-1/16" x 3/4" Hole Pattern
- Lifetime warranty

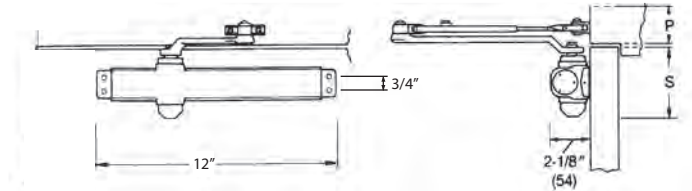


### 816RWPA

816RWPA-689, 816RWPA-695

Our Slim-line closer is one we most recommend for your inventory. Fully adjustable and with all the bells and whistles, this closer will work for almost any door situation.

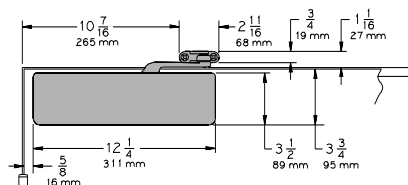
- Grade 1 ANSI A156.4
- Meets and exceeds ADA requirements ANSI 117.1
- Tri Packed
- Adjustable Back check sweep and latching speeds
- Power Adjustable 1-6
- Self-Drilling screws
- Slim Line Cover included
- UL Listed
- 12" x 3/4" Hole Pattern
- Lifetime Warranty



### 416RWPA

One of the most reliable cast iron closers on the market; we recommend this closer be used in medium to high traffic scenarios. Our 416 comes fully adjustable and will service the heaviest of doors, down to ADA Compliancy.

- Grade 1 ANSI A156.4
- Cast Iron
- Meets and exceeds ADA requirements ANSI 117.1
- Tri Packed
- Adjustable Back check sweep and latching speeds
- Power Adjustable 1-6
- Self-Drilling screws
- Full Line Cover included
- UL Listed
- Lifetime Warranty





## Exit Devices

Precision Architectural Exit Devices are manufactured out of the highest quality of material to be one of the most reliable and affordable exit devices in you inventory. These all metal exit devices, allow you the flexibility to be able to install these exits on Narrow Stile, Medium Stile, Wide Stile, Hollow Metal or Wood doors.

### **GRADE 1** *Narrow Stile*



**66TP**



**66TP-DT**



**66P**



**66P-DT**



**66L**



**66L-DT**



**66EO-3-US32D**



**6627EO-3-US32D**

### **GRADE 2** *Medium Stile*



**44KIL**



**44KIL-D**



**44L**



**44EO-3-US28**



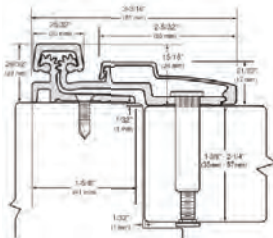
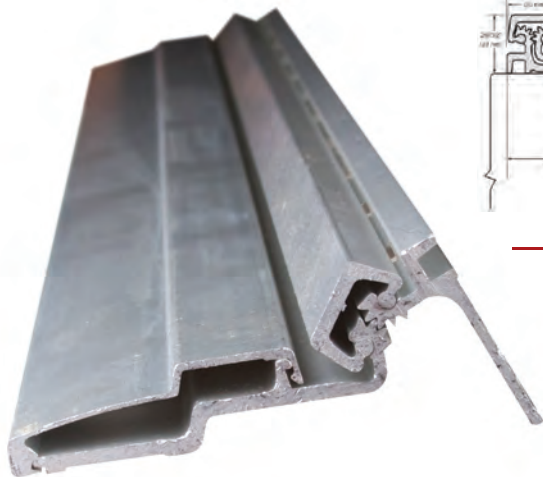
**4427EO-3-US32D**



## Hinges

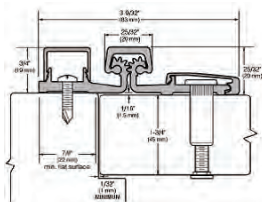
Precision Architectural Hinges meet or exceed ANSI Standard for Hinges. All of our manufactured hinges comes with an industry best warranty. Whether you are a door manufacturer or a door repair company, we have a hinge solution for all of your needs. We are confident that our hinges will be one of the best and most reliable products in your inventory.

### FULL SURFACE



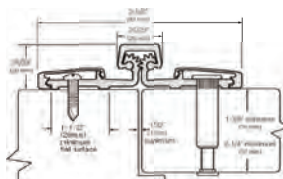
#### GHHD210

- Full Surface Application
- High Frequency to Heavy Medium Frequency Doors
- Maximum Weight 450 lbs
- Minimum 1 5/8" Frame Face Needed
- Security Molding



#### GHHD157

- Limited Frame Full Surface Application
- High Frequency to Heavy Medium Frequency Doors
- Maximum Door Weight 450 lbs
- Minimum 7/8" Frame Face Needed
- Security Molding



#### GHHD057

- Bi-Fold Full Surface Application
- High Frequency to Heavy Medium Frequency Doors
- Maximum Door Weight 450 lbs
- Minimum 7/8" Frame Face Needed
- Security Molding

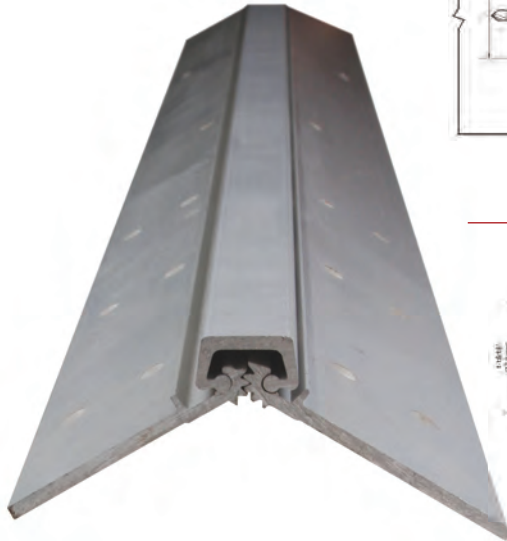
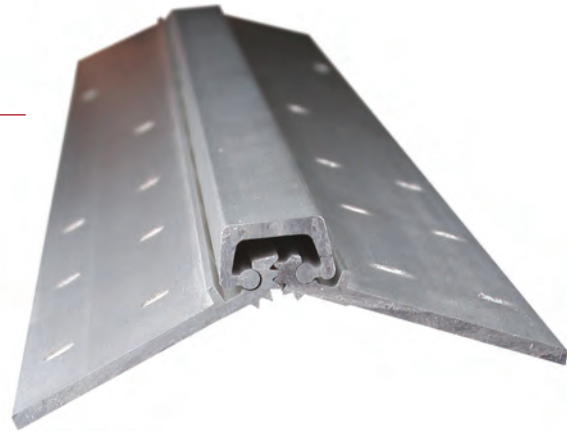
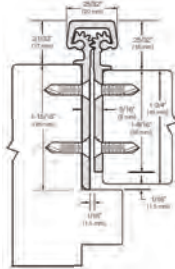




## FULL MORTISE

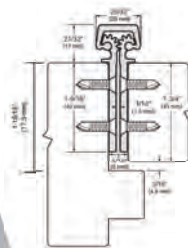
### GHHD111

- Full Mortise Concealed Leaf Application
- High Frequency to Heavy Medium Frequency Doors
- Maximum Door Weight 450 lbs
- 1/8" Inset



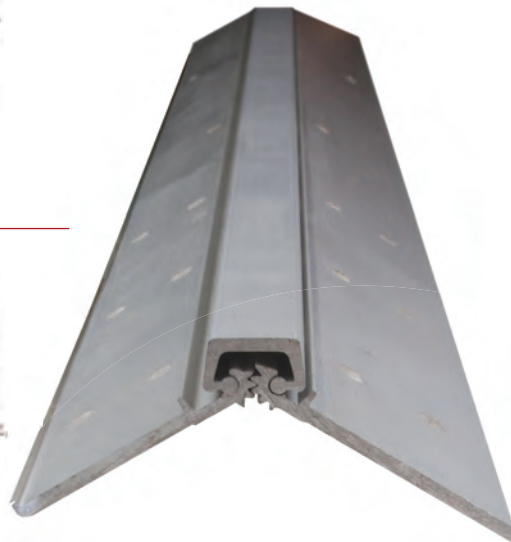
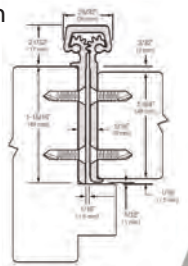
### GHHD112

- Full Mortise Concealed Leaf Application
- High Frequency to Heavy Medium Frequency Doors
- Maximum Door Weight 450 lbs
- Flush Mount with No Inset



### GHHD224

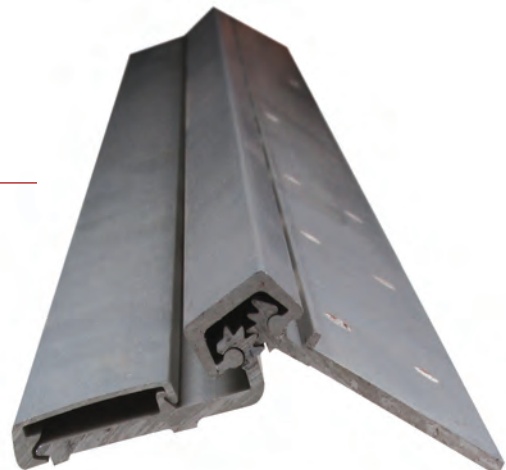
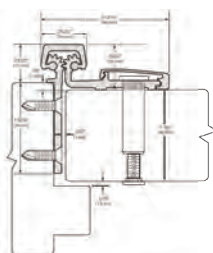
- Full Mortise Concealed Leaf Application
- High Frequency to Heavy Medium Frequency Doors
- Maximum Door Weight 450 lbs
- 3/32" Inset
- Door Edge w/ Protection Lip



## HALF SURFACE

### GHHD053

- Half Surface Application
- High Frequency to Heavy Medium Frequency Doors
- Maximum Door Weight 450 lbs
- 1/8" Inset
- Security Molding





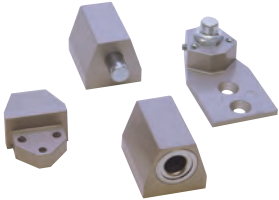




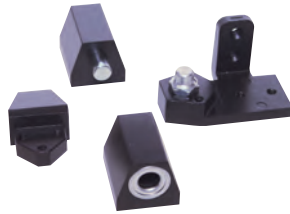
## Offset Pivots

Each product comes in an aluminum or dark bronze finish.

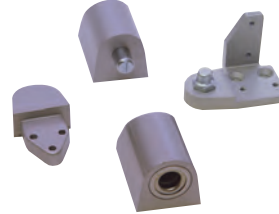
**OP09**  
Vistawall NH



**OP10**  
Vistawall



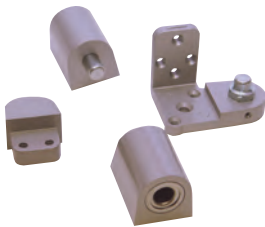
**OP12**  
Amarlite



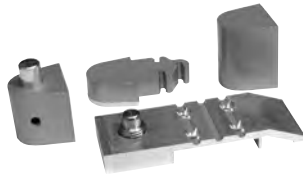
**OP14**  
Pittco (PPG)



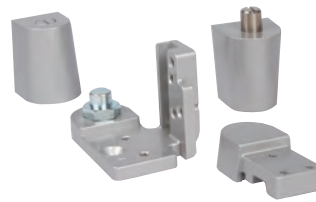
**OP15**  
US Aluminum



**OP16**  
Aldora



**OPKP**  
Kawneer

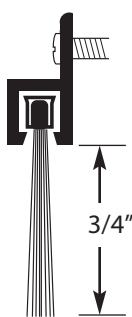


**OPYKK**  
YKK

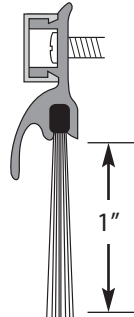


## Flat Goods

**DOOR SWEEPS**  
**NYLON BRUSH**

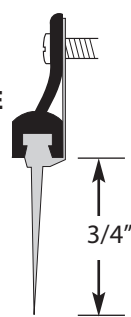


**DB102NB**

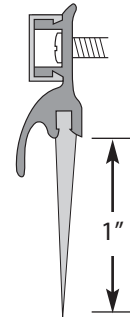


**DB202NB**

**VINYL SINGLE BLADE**

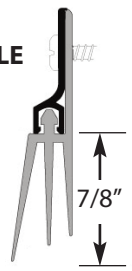


**DB101V**



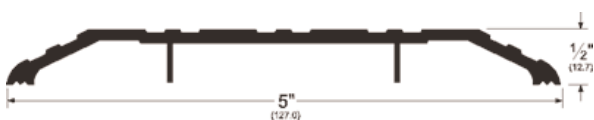
**DB201V**

**VINYL TRIPLE BLADE**

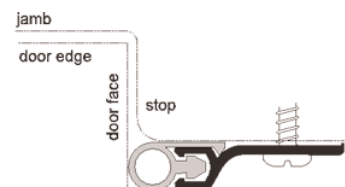


**DB103V**

**THRESHOLD**  
**DT101**



**PERIMETER GASKETING**  
**PG101V**



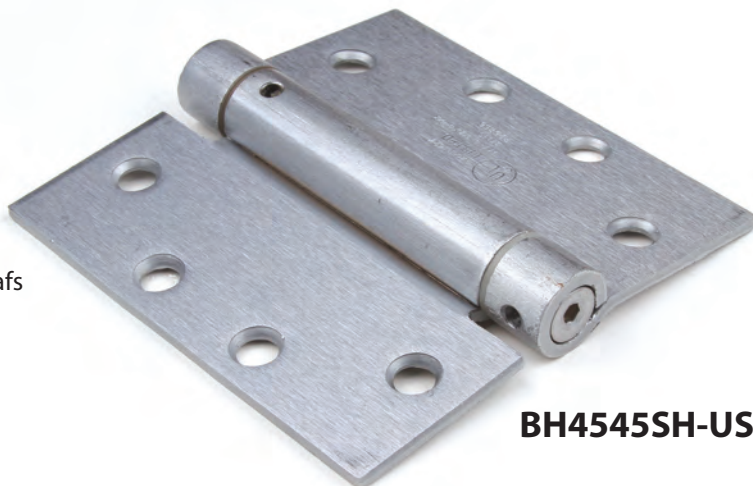


## Spring Hinge

- Full Mortise 4.5" x 4.5"
- Self Closing
- Square Corner
- Material Gauge .134
- Hinge Swag 1/16" Clearance between leafs

Available Finishes

US26D (Brushed Chrome)



**BH4545SH-US26D**

## Butt Hinges

- Full Mortise 4.5" x 4.5"
- 5 knuckle ball bearing
- Square Corner
- Non-rising removable pin with button style tip
- Ansi Template
- Material Gauge .134
- Hinge Swag 1/16" Clearance between leafs

Available Finishes

USP (US Primed), US26D (Brushed Chrome), US10B (Oil Rubbed Bronze), US32D (Brushed Stainless Steel)



**BH4545N-USP**



**BH4545BBN-US10B**



**BH4545BBN-US26D**



**BH4545BBN-US32D**

## Radius Butt Hinges

- Full Mortise 4.5" x 4.0"
- 5 knuckle ball bearing
- Radius Corner
- Non-rising removable pin with button style tip
- Ansi Template
- Material Gauge .134
- Hinge Swag 1/16" Clearance between leafs

Available Finishes

US26D (Brushed Chrome), US10B (Oil Rubbed Bronze)

US32D (Brushed Stainless Steel)



**DCBB4540NR10B**



**DCBB4540NR26D**



**DCBB4540NR32D**



**Precision**  
Architectural Hardware

1109-C Technology Drive • Indian Trail, NC 28079  
866-797-1960 • 866-306-4473 fax • [pahardware.com](http://pahardware.com)