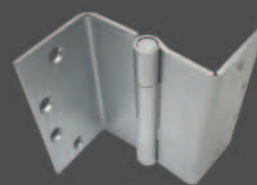
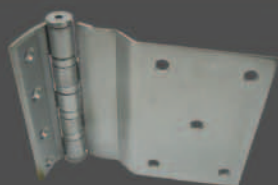
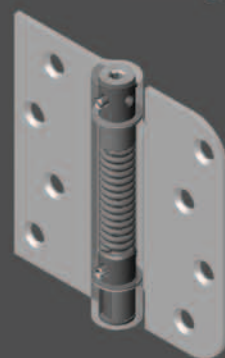
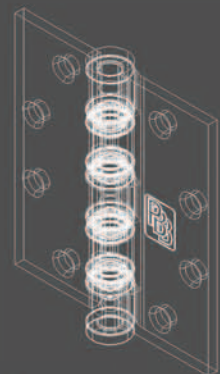
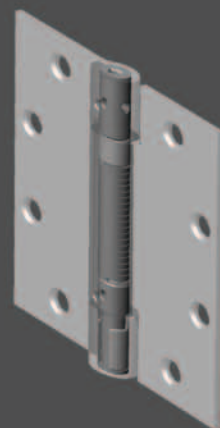
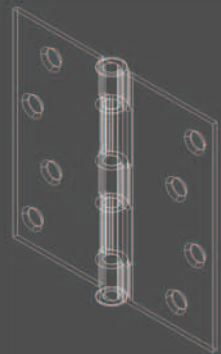




WORLD CLASS HINGES®





EXPLANATION OF NUMBERING SYSTEMS & SYMBOLS

First Two/Four Characters Denotes Style / Function of Hinge:

2B	=	2 Knuckle Ball Bearing
2H	=	2 Knuckle Ball Bearing Heavy Weight
2P	=	2 Knuckle Plain Bearing
4B	=	4 Ball Bearing Heavy Weight
4C	=	Concealed Bearing Heavy Weight
4F	=	5 Knuckle Concealed Heavy Weight
PB	=	Plain Bearing
BB	=	Ball Bearing
CP	=	Concealed Plain Bearing
CB	=	Concealed Bearing
CS	=	Continuous Standard Weight
CH	=	Continuous Heavy Weight
FB	=	5 Knuckle Concealed Bearing
IT	=	3/16" Slip-In Insert
IF	=	5/16" Slip-In Insert
PH	=	Concealed Bearing Heavy Weight Prison Hinge
RB	=	Raised Barrel
RS	=	Residential Spring Hinge
RP	=	Residential Plain Bearing
SP	=	Spring Hinge
SC4B	=	Swing Clear Heavy Weight
SCPB	=	Swing Clear Plain Bearing
SCBB	=	Swing Clear Ball Bearing
WT4B	=	Wide Throw Heavy Weight
WTPB	=	Wide Throw Plain Bearing
WTBB	=	Wide Throw Ball Bearing
WB	=	Welding Butt

Third/Fifth Character Denotes Base Material Used

8	=	Wrought Steel
5	=	Stainless Steel
3	=	Aluminum
2	=	Wrought Brass

Fourth / Sixth Character Denotes Type of Hinge

1	=	Full Mortise
2	=	Half Mortise
3	=	Full Surface
4	=	Half Surface

Example 1=PB81

PB	=	Plain Bearing
8	=	Steel
1	=	Full Mortise

Example 2=4B24

4B	=	Four Bearing Heavy Weight
2	=	Brass
4	=	Half Surface

Example 3=SP51

SP	=	Spring Hinge
5	=	Stainless Steel
1	=	Full Mortise

Example 4=SC4B83

SC4B	=	Swing Clear Heavy Weight
8	=	Steel
3	=	Full Surface

BASE MATERIAL

STEEL-

Wrought Steel is durable yet corrosive. Best if used on interior applications where temp. and humidity are controlled. Steel ball bearing hinges may be used on fire rated openings.

BRASS-

Wrought Brass is rust resistant and decorative. Apply brass hinges where appearance is of great concern yet humidity is also a factor. Brass hinges may not be used on fire rated openings.

STAINLESS STEEL-

Stainless Steel Types 302/304 is rust resistant, durable and decorative. Apply stainless hinges on highly corrosive areas such as chemical storage, seacoast, or industrial areas where acids or atmospheric conditions exist. Stainless steel ball bearing hinges may be used on fire rated openings.

EXTRAS

RC	-	1/4" Radius Corner
RC5	-	5/8" Radius Corner
NRP	-	Non Removable Pin
MAX	-	Maximum Security Stud w/NRP
HT	-	Hospital Tip
Z	-	Rust Resistant Base
BP	-	Brass Pin
SP	-	Stainless Steel Pin
BT	-	Ball Tip
ST	-	Steeple Tip
UT	-	Urn Tip
NH	-	No Holes

ELECTRICAL HINGES

EL	-	Electrical Through Wire
EM	-	Electrical Monitor
EMW	-	Electrical Monitor w/Through Wire
EMS	-	Exposed Monitor Switch

STOCK FINISHES

USP	US26D	US4	US10
DBZ	US10A	US3	US26
US10B	US32D	ALUM	US32

ALL SIZES AVAILABLE FROM
3" X 3" THROUGH 8" X 4 1/2"

NOTE: We are not limited to sizes or finishes listed above.
Call for availability on items not shown.



**UL LISTED SPRING HINGE
RESIDENTIAL WEIGHT**

Gauges available: .100

For use on residential 1-3/4" and 1-3/8" standard light weight, low frequency doors weighting under 110 lbs. as a self closing device. To be installed in conjunction with hinges of the same type or bearing type only. UL listed to Grade 3 specifications K8107-1F.



U.L. LISTED SPRING HINGE

Gauges available: .123,.130,.134

For use on doors weighing under 150 lbs. as a self closing device. To be installed in conjunction with hinges of the same type or ball bearing type only. U.L. listed to Grade 1, specifications K8107-1F.



**UL LISTED
SINGLE ACTING SPRING HINGE**

Gauges available: .120

For use on doors weighting under 150 lbs. as a self closing device. Minimizes cost of intalling a door closer device. Convert doors to self-closing in existing buildings. Always verify local fire code requirements. UL listed to Grade 2 specifications K81011F.



CONTINUOUS HINGE

Heavy duty continuous extruded 6063-T6 Aluminum alloy gear hinges or 14 gauge stainless steel pin and barrel construction. 83",85",95", and 120" are all standard. UL listed.



BALL BEARING

Gauges available: .123,.130,.134,.146

For use on standard weight doors or doors receiving average frequency usage. Ball bearing type hinges must be used on doors in conjunction with door closers and on all fire rated openings.



CONCEALED BEARING

Gauges available: .123,.130,.134,.146

For use on standard weight doors or doors receiving average frequency usage. Concealed bearing type hinges must be used on doors in conjunction with door closers and on all fire rated openings.



CONCEALED BEARING 2 KNUCKLE

Gauges available: .130,.134,.146

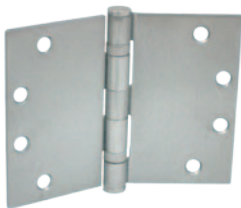
For use on standard weight doors or doors receiving avg. freq. usage. Concealed bearing type hinges must be used on doors in conjunction with door closers and on all fire rated openings. Two knuckle construction for ease of installation.



ELECTRIC

Gauges available: .130,.134,.146,.180,.190

Electric hinges allow electrical currents and signals to pass from jamb through the hinge into the door in an invisible manner. Available in ball bearing type only. (For options available see "extras" on previous page.)



WIDE THROW BALL BEARING

Gauges available: .123,.130,.134,.146

For use on standard weight doors or doors receiving average frequency usage. For deep reveals or obstacles created by trim, projecting walls or 180° door swing. May be used on fire rated openings.



BALL BEARING HEAVY WEIGHT

Gauges available: .180,.190

For use on heavy doors or doors receiving high frequency usage. Ball bearing type hinges must be used on doors in conjunction with door closers and on all fire rated openings.



**CONCEALED BEARING
HEAVY WEIGHT**

Gauges available: .180,.190

For use on heavy doors or doors receiving high frequency usage. Concealed bearing type hinges must be used on doors in conjunction with door closers and on all fire rated openings.



**CASTED STAINLESS
STEEL PRISON HINGE**

Gauges available: .180,.190

For use on heavy weight metal or wood doors or doors receiving high freq. usage in hospitals, schools or public buildings where security issues exist. Hospital tip, concealed bearings and security stud all included with hinge. Maybe used on fire rated openings.



PLAIN BEARING

Gauges available: .123,.130,.134,.146

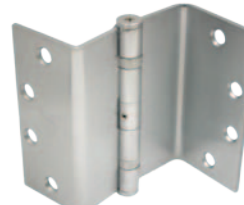
For use on standard weight doors or doors receiving low frequency usage.



**PLAIN BEARING
RESIDENTIAL WEIGHT**

Gauges available: .090,.098

For use on residential 1-3/4" and 1-3/8" standard light weight, low freq. doors hung in wood jambs receiving average usage in residential construction.



**SWING CLEAR
BALL BEARING-STANDARD WEIGHT**

Gauges available: .123,.130,.134,.146

For use in hospitals, institutional or commercial type buildings for barrier-free environment. Wherever doors are required to meet barrier-free codes (ADA) or are required to swing completely clear of the openings so that wide equipment can pass through without damaging doors, frames or equipment, reducing opening maintenance.



**SWING CLEAR
BALL BEARING-HEAVY WEIGHT**

Gauges available: .180,.190

For use in hospitals, institutional or commercial type buildings for barrier-free environment. Wherever doors are required to meet barrier-free codes (ADA) or are required to swing completely clear of the openings so that wide equipment can pass through without damaging doors, frames or equipment, reducing opening maintenance.

PBB, Inc.- Manufacturers of quality hinges, are based in Ontario, California. PBB is backed with many years of experience in the craft of making quality hinges. We are devoted to maintaining high quality standards with our continual product improvement, service and reliability.

In today's marketplace, economics is the pendulum of success or failure. PBB, Inc. and our team of representatives would like to help you in achieving that success through one of many ways.

We offer service- From our customer service department, to our factory and field representatives, we have a strong commitment in giving you, our customer 100%

We offer reliability- In our industry, today's specifications are based on performance standards and we insure that we meet or exceed all ANSI and BHMA product standards with constant testing and product evaluation by Warnock Hersey, ITS and Underwriters Laboratories.

We offer quality- From the high quality steel that goes into our hinge, to the product inspectors we have positioned in all phases of manufacturing, to the crew of highly trained finished goods inspectors at our facility, we maintain high quality standards so you can be confident you are supplying your customers with a quality product.

COMPARISON CHART PART NUMBER EQUIVALENTS						
TYPE	PBB	ANSI	HAGAR	MCKINNEY	STANLEY	BOMMER
2 KNUCKLE BALL BEARING HEAVY WEIGHT STEEL	2H81	A8111	AB930	TA3750	-	-
2 KNUCKLE BALL BEARING STEEL	2B81	A8112	AB920	TA2731	CB700	-
2 KNUCKLE PLAIN BEARING STEEL	2P81	A8133	920	T2731	700	-
BALL BEARING 3/16" INSERT STEEL	IT81	A8152	BB1278	TYPEITB2714	FBB179 SLIPIN	BB5050
BALL BEARING 5/16" INSERT STEEL	IF81	A8142	BB1277	TYPEIITB2714	FBB179 SLIPIN	BB5050
BALL BEARING BRASS	BB21	A2112	BB1191	TB2314	FBB191	BB5001
BALL BEARING HEAVY WEIGHT BRASS	4B21	A2111	BB1199	T4B3386	FBB199	BB5005
BALL BEARING HEAVY WEIGHT STAINLESS	4B51	A5111	BB1199	T4B3386	FBB199	BB5006
BALL BEARING HEAVY WEIGHT STEEL	4B81	A8111	BB1168	T4B3786	FBB168	BB5004
BALL BEARING STAINLESS	BB51	A5112	BB1191	TB2314	FBB191	BB5002
BALL BEARING STEEL	BB81	A8112	BB1279	TB2714	FBB179	BB5000
BEARING SWING CLEAR FULL SURFACE HEAVY WEIGHT STEEL	SC4B83	A8321	BB1266	T4A3797	FBB266	BB5224
BEARING SWING CLEAR HALF MORTISE HEAVY WEIGHT STEEL	SC4B82	A8221	BB1264	T4A3789	FBB264	BB5124
BEARING SWING CLEAR HALF SURFACE HEAVY WEIGHT STEEL	SC4B84	A8421	BB1270	T4A3796	FBB269	BB5324
BEARING SWING CLEAR HEAVY WEIGHT STEEL	SC4B81	A8121	BB1262	T4A3795	FBB268	BB8024
BEARING SWING CLEAR STEEL	SCBB81	A8122	BB1260	TB2895	FBB248	BB8020
CONCEALED BEARING HEAVY WEIGHT PRISON HINGE STAINLESS	PH51	A5111	IHTHB953	ICHTB386	UHTCB1961	-
CONCEALED BEARING STEEL	CB81	A8112	BB700	TA714	CB1900	BB8000
CONCEALED HEAVY WEIGHT BALL BEARING BRASS	4C21	A2111	BB850	TA386	CB1961	BB8005
CONCEALED HEAVY WEIGHT BALL BEARING STAINLESS	4C51	A5111	BB850	TA386	CB1961	BB8006
CONCEALED HEAVY WEIGHT BALL BEARING STEEL	4C81	A8111	BB750	TA786	CB1901	BB8004
CONCEALED PLAIN BEARING STEEL	CP81	A8133	700	T714	1900	8000
CONTINUOUS HINGE ALUMINUM	CH31	-	780	MCK	662	FM
CONTINUOUS HINGE STAINLESS	CH51	-	790	MCK300	651	-
FULL SURFACE STEEL	BB83	A8312	BB2171	TB2771	FBB171	BB5200
HALF MORTISE STEEL	BB82	A8212	BB1129	TB2774	FBB167	BB5100
HALF SURFACE STEEL	BB84	A8412	BB1173	TB2772	FBB173	BB5300
PLAIN BEARING BRASS	PB21	A2133	1191	T2314	F191	5001
PLAIN BEARING STAINLESS	PB51	A5133	1191	T2314	F191	5002
PLAIN BEARING STEEL	PB81	A8133	1279	T2714	F179	500
RESIDENTIAL PLAIN BEARING STEEL	RP81	A8184	1741	1400	741	-
RESIDENTIAL SPRING HINGE DOOR CLOSER	RS81	K8107-1F	1251	1502	2060	4300
SPRING HINGE DOOR CLOSER	SP81	K8107-1F	1250	1502	2060	4310
SPRING HINGE SINGLE ACTING	SA81	K8107-1F	-	-	-	4030
WELDING BUTT STEEL	WB81	A8112	-	-	-	-
WIDE THROW BALL BEARING STEEL	WTBB81	A8112	WTBB1299	TA2798	FBB179WT	BB5014
WIDE THROW HEAVY WEIGHT STEEL	WT4B81	A8112	WTBB1168	T4A3786	FBB168WT	BB5010
WIDE THROW PLAIN BEARING STEEL	WTPB81	A8133	WT1279	-	F179WT	5010

For More Information

Contact your local representative or PBB, Inc., (800) 726-3414 (909) 923-6250 Fax (909) 923-6248
1311 E. Philadelphia Street, Ontario, CA 91761 Web Site: <http://www.pbbinc.com>